

Protecta kote

POLYURETHANE PROTECTIVE COATING



Protecta kote

POLYURETHANE PROTECTIVE COATING

INTRODUCTION

Protecta-kote is a unique ready-to-use polyurethane coating, which is easy-to apply, durable, flexible and non-slip. Protecta-kote will protect the surface from stone-damage, rust, petrol, most chemicals and acids.

Protecta-kote can be applied to vehicles, boats, floors, ramps and walkways or any other application where an attractive, tough, non-slip finish is required.

Protecta-kote can be easily applied using a brush, foam roller or spray gun.

Protecta-kote is available in a variety of colours in either non-slip or smooth finish texture.



FROM THIS....



TO THIS.

Protecta kote

POLYURETHANE PROTECTIVE COATING

PRODUCT FEATURES

- **Single Component**
Protecta-kote is single component polyurethane, which means that no mixing or blending is required prior to application. Protecta-kote does not require specialized application equipment that twin-component systems require. As a single-component system it is ready to use making it ideally suited to being sold as a DIY or retail product.
- **Polyurethane technology**
Polyurethane's offer a great deal of advantages over other coating systems such as epoxy's and acrylics. Polyurethane's chemically bond to the painted surface leaving an extremely tough coating, which will not wear or peel. Polyurethane's also bond to a number of surfaces including metal, concrete, wood, fiberglass, plastic and rubber. Polyurethane's are extremely flexible and elastic so that the coating will bend and flex with the substrate and not flake or peel. This flexibility is particularly important in automotive applications and other areas where there are vibrations.
- **Ready-to-use, Easy to Apply**
Protecta-kote is sold ready-to-use and requires no mixing or blending of components. Simply prepare the surface, roll or spray on the Protecta-kote and allow to dry.
- **Tough non-slip finish**
Protecta-kote is formulated using rubber granules that give it an attractive textured-non slip finish. This makes Protecta-kote ideal for use on stairs, walk ways and floors as well as boat decks.

Protecta kote

POLYURETHANE PROTECTIVE COATING

PRODUCT FEATURES CONTINUED:

- **Non Abrasive**
Because Protecta-kote is formulated from Polyurethane and rubber granules it is non abrasive. This means that Protecta-kote does not have the sandpaper like feel of other non-slip coatings. Protecta-kote will not damage or scratch any goods that be placed on it. Being non-abrasive it will also not wear down like other coatings.
- **Bonds to most surfaces**
Protecta-kote can be applied to almost any surface including metal, wood, concrete, fiberglass, plastic and rubber. This makes Protecta-kote suitable for a wide number of applications.
- **Prevents rust and corrosion**
Because Protecta-kote chemically bonds to the substrate it will prevent the surface from corroding
- **Resists gasoline, acids, solvents and other chemicals**
Protecta-kote will resist the surface from gasoline, acids, solvents and most chemicals making it ideal protection for vehicles, boats and factory floors.
- **Easy to repair**
Protecta-kote is easy to repair, simply paint over with new Protecta-kote.
- **Available in a range of colours**
A limited range of standard colours are available. Specific colours can be made up on request

Protecta kote

POLYURETHANE PROTECTIVE COATING

PRODUCT ADVANTAGES

One Part	No mixing of components required
Totally Flexible	Will not flake, chip or peel
Repairable	Bonds to itself
Easy to apply	No specialized equipment needed
Protection	Resists water, rust, acids and chemicals
Economical	Lasts for years and costs less
Versatile	Can be applied to metal, wood, concrete, fiberglass Aluminium, plastic and rubber
Durable	Polyurethanes are stronger, more flexible and have better impact and abrasion resistance than other coatings making them more durable.

Protecta kote

POLYURETHANE PROTECTIVE COATING

SUGGESTED APPLICATIONS:

Automotive

- Pickup Truck Bed liners
- Trucks and delivery vehicles
- Buses and trailers
- Caravan roofs and showers
- 4 x 4's and recreational vehicles
- Hydraulic tail lifts
- Underbody and wheel arch protection



Protecta kote

POLYURETHANE PROTECTIVE COATING

SUGGESTED APPLICATIONS:

MARINE

- Boat decks
- Shipping docks and ramps
- Stowage areas
- Showers and wet areas



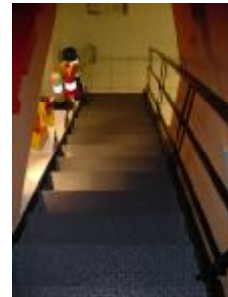
Protecta kote

POLYURETHANE PROTECTIVE COATING

SUGGESTED APPLICATIONS:

Safety

- Accessibility ramps and walkways
- Fire Exits
- Detectable warning systems
- Work areas
- Industrial and kitchen floors
- Train platforms
- Stairs



Protecta kote

POLYURETHANE PROTECTIVE COATING

READY-TO- USE KIT

Protecta-kote is sold in one litre and 4 litre cans. Protecta-kote can also be purchased in a ready-to-use kit which contains all the accessories needed to coat 4 - 5 square metres or the load-bed of one small pick-up truck or delivery vehicle.



The Protecta-kote kit contains:

- Four litres of protective coating
- Two polypropylene foam rollers for easy application
- One abrasive pad to prepare surface
- One application brush for corners and tight spots
- Complete step-by-step instructions



The following materials are **not** included in the Protecta-kote kit and may be required:

- Xylene (Xylol), Acetone or suitable detergent to clean and prepare the surface
- Masking tape and rubber gloves
- Stirring stick and clean-up rags
- Paint tray

Protecta KOTE

POLYURETHANE PROTECTIVE COATING

APPLICATION INSTRUCTIONS FOR PICK UP TRUCKS

EQUIPMENT

The following equipment is recommended for PROTECTA-KOTE application:
Polypropylene stippled foam roller, paint brush, scouring pad, roller tray, rubber gloves, paint mixer drill attachment or stirring rod, wide masking tape, clean-up rags and xylene, acetone, MEK or a cleaning detergent.

INSTRUCTIONS

1. Stir Protecta-Kote very well before use, keeping the rubber crumbs in suspension. Use a mixer drill attachment if available otherwise use a stirring rod. Stir for at least 3 minutes just before beginning the application and stir occasionally during the application.
2. Remove vehicle tailgate if it is likely to be an obstruction.
3. Clean heavy dirt and grime from the truck bed or other surface using Xylene or Acetone. Alternatively water with an alkaline (only) domestic detergent may be used.
4. Allow the surface to dry completely.
5. All painted surfaces where PROTECTA-KOTE is to be applied should be roughened with a scouring pad or medium grit sandpaper leaving no glossy areas.
6. Blow or dust the sanding dust away and wipe the surface down with xylene or acetone only. Do not use any other solvents. ENSURE THAT WHEN YOU ARE WORKING IN A WELL VENTILATED AREA AND ARE WEARING GLOVES
7. Leave to dry.
8. Old paintwork requires special attention: Loose paint must be completely removed, Rust must be removed to bare metal and primed before application of PROTECTA-KOTE, Clean and roughen remaining paint as per new paint (above).





POLYURETHANE PROTECTIVE COATING

APPLICATION INSTRUCTIONS CONTINUED

9. Use masking tape and paper sheets to cover any areas which you wish not to be coated including latch bolts and drain holes. Ensure that you have clean-up solvents and rags in easy reach. Immediately remove PROTECTA-KOTE spills, drips and spots made while painting with xylene.

10. Stir Protecta-kote very well (For best results use an electric drill with a stirring attachment).

11. Protectakote may be thinned with up to 10% Xylene if it thickens after opening. Do not use any other solvents.

12. Using a paintbrush, paint corners, seams and difficult areas first. Dab PROTECTA-KOTE on rather than painting it on like paint.

13. Begin applying the first coat of Protecta-kote using the foam roller provided. For best results apply the first coat in one direction and complete each coat without break. Do not apply too thickly as "mud-cracking" will appear. Try to avoid the allowing the Protecta-kote to clump or run. Clean up any spills immediately.

14. Between coats, keep brush and roller moistened with xylene and protect for later use or discard and use a new one.

15. Stir the Protecta-kote again before starting the second coat.

16. Apply the second coat as soon as the first coat is tack free (2-6 hrs depending on conditions). Apply at 90° (perpendicular) to the first coat for a more even finish. Poor inter-coat adhesion will result when the second coat is applied after the first coat has fully cured. If the first coat has fully cured the surface must be abraded with 180 grit sand paper before applying the second coat.

17. Remove masking tape as soon as the second coat has been applied using a Stanley blade to prevent tearing.

18. The vehicle will be ready for light use in 6 - 9 hours. Full cure will take 48 hours so avoid placing heavy articles onto the painted surface for this period.



POLYURETHANE PROTECTIVE COATING

APPLICATION TO SPECIFIC SURFACES

If in any doubt please test the adhesion of PROTECTA-KOTE by applying a test patch.

UNPAINTED STEEL

- Rust must be removed down to the bare metal.
- Steel should be roughened, cleaned and primed with Duram Metcote or a recommended two component epoxy primer or polyurethane primer.

GALVANISED STEEL

- It is essential that galvanized steel is cleaned and abraded until it is 'water-break free'. In this state, when wet, water will form a thin film that will not retract at the edges or break or bead at all, even on vertical standing.
- Cleaning can be done with a scouring pad and an alkaline (only) domestic detergent. Certain 'Galv Cleaners' are also effective at producing a 'water break free' surface.
- Rinse well with water.
- Prime with Duram Metcote or a recommended two-component epoxy primer, according to the manufacturers instructions.

FIBREGLASS

- Unweathered fibreglass and gel-coats must be free of oils, waxes, polishes etc. then sanded to remove all gloss and immediately primed.
- Prime with Duram Metcote or a recommended two-component solvent based epoxy primer, according to the manufacturers instructions.

WOOD

- Wood should be free from oils, waxes and polishes and lightly sanded to expose fresh wood and the surface roughened.

Protecta kote

POLYURETHANE PROTECTIVE COATING

APPLICATION TO SPECIFIC SURFACES CONTINUED

ALUMINIUM

- Freshly roughened surfaces should be immediately primed with Duram Metcote or an aluminium/one component polyurethane compatible primer.

CONCRETE

- Brush-finished or hand-troweled concrete gives best adhesion.
- Ensure that concrete is at least 28 days old and is clean, dry and oil free.
- Power floated and very smooth concrete will need to be acid etched to promote adhesion.
- If necessary clean concrete with a suitable de-greaser.
- Prime with a water or solvent based, two-component, epoxy primer.
- On bare concrete, better adhesion is obtained by thinning 1st coat 10% with Xylene.
- Old concrete needs special attention as recommended by the epoxy primer supplier.

WARNINGS AND CAUTIONS

Protecta-kote contains flammable solvents. It bonds to skin, clothing etc. and is very difficult to remove once cured. Use this product in a well-ventilated area and avoid breathing solvent vapours. Always wear rubber gloves and protective clothing.

Protecta-kote must be protected from moisture. Whenever possible keep lid tightly closed.

Protecta-kote can be diluted with xylene if necessary. Xylene may also be used to clean rollers and clean-up spills.

Acetone can be used for cleaning surfaces but not for diluting Protecta-kote.

Do not use methylated spirits, lacquer thinners, white spirits or other solvents. They will permanently prevent PROTECTA-KOTE from curing.

Protecta kote

POLYURETHANE PROTECTIVE COATING

SPRAY APPLICATION

Protecta-kote can be sprayed using a simple shutz (or underbody) gun and compressed air. Protecta-kote for spray applications is supplied in a customized one litre can that is designed to attach directly onto the spray gun. These spray-guns can be purchased from Zest Polyurethanes.



SPRAY EQUIPMENT

The following equipment is recommended for PROTECTA-KOTE spray application: Xylene for cleaning and dilution, scouring pad and/or medium grit sandpaper, rubber gloves, paint mixer drill attachment or stirring rod, masking tape, and clean-up rags and standard air compressor. Spray pressure of 3-5 bar (40-50 psi) is required. The use of a respiratory mask to prevent solvent inhalation is recommended.



POLYURETHANE PROTECTIVE COATING

SPRAY APPLICATION INSTRUCTIONS

1. Prepare surface as per normal Protecta-kote application.
2. Open Protecta-kote can being careful to pry the inner seal out using a flat-blade screwdriver. Contents of the can may be under pressure so angle the can away from the body while lifting the seal.
3. Using a stirring stick or drill attachment mix the contents of the can thoroughly being careful to lift any of the rubber crumbs that may have settled at the bottom of the can.
4. Reinstall screw cap and shake the can vigorously for a few minutes.
5. Remove the cap again and thread the spray gun into the top of the can and tighten firmly.
6. Connect the spray gun to an air compressor with a pressure of 3 - 5 bar (50 - 60 PSI). test spray the gun away from the vehicle to become familiar with the spray pattern and coverage.
7. Spray a thin uniform coat of PROTECTA-KOTE to the entire surface. Do not apply to thickly to prevent running and drips. Clean up any over-sprays immediately.
8. Clean out the spray gun with Xylene between coats to prevent it from clogging.
9. Wait until the first coat has become touch-dry, about 1 to 3 hours, before applying a second coat. Poor inter-coat adhesion will result when the second coat is applied after the first coat has been allowed to fully cure. If the first coat has fully cured the surface must be abraded with 180 grit sand papers before applying the second coat.
10. Clean the spray gun out thoroughly with Xylene after finishing the second coat.

Protecta kote

POLYURETHANE PROTECTIVE COATING

TECHNICAL INFORMATION

APPLICATION

PROTECTA-KOTE is a one component polyurethane that can be easily applied by roller, brush or spray to provide an attractive non-slip coating. Unlike other coatings it is non-abrasive and so does not damage goods.

CURING TIME

Depending on temperature and humidity PROTECTA-KOTE can normally be put into service in approximately 12-24 hours. An accelerator is available for cold weather applications where a faster cure is required. Final chemical resistance and physical properties are reached in 4-7 days.

COVERAGE

1.2-1.5m² / litre for normal applications.
0.5m²/litre for high wear applications.

COLOURS

Protecta-kote is available in a variety of standard colours including black, grey, red and blue. Please refer to our colour standard booklet for complete details. As with all aromatic polyurethane's, colours darken with U.V. exposure and gloss is lost with time. Light-stable versions are also available in light and dark colours. See section on Protecta-kote UVR for details on the light stable version.

OVERCOATING AND REPAIRS

PROTECTA-KOTE can easily be repaired or over coated after cleaning and sanding the surface.

SURFACE FINISH

PROTECTA-KOTE has a glossy finish and can be applied to give a relatively smooth or rough finish.

SHELF LIFE AND POT LIFE

PROTECTA-KOTE has a shelf life of 1 year from date of manufacture and is best used within 24 hrs from first opening.

STORAGE

Store indoors between 15-25°C out of direct sunlight. Excessive temperature will cause thickening.

Protecta kote

POLYURETHANE PROTECTIVE COATING

TECHNICAL INFORMATION CONTINUED

CO-EFFICIENT OF FRICTION (ASTM D1894) (g/g) 200g sled

	DRY		WET		OIL (SAE 30)	
	Static	Kinetic	Static	Kinetic	Static	Kinetic
Black	1.7	1.4	1.2	1.1	2.0	1.1
Grey	1.7	1.4				

TENSILE STRENGTH (ASTM D638)

	Tensile strength at break (MPA)
7 day cured	11-15
After 500 hrs QUV (n=4)	11-15

ELONGATION (ASTM D638)

	ELONGATION (%)
7 day cured	330 – 400
After 500 hrs QUV (n=4)	330 – 400

UV RESISTANCE

500 hrs of QUV accelerated weathering resulted in no deterioration in physical properties and no surface cracking. There will however be a loss of gloss and colour with continued exposure.

IMPACT RESISTANCE

Due to its excellent flexibility, PROTECTA-KOTE has the ability to stay bonded to substrates even when they are deformed by impact.

Protecta kote

POLYURETHANE PROTECTIVE COATING

CHEMICAL RESISTANCE

The following table gives the results of full immersion of Protecta-kote for seven (7) days in some common chemicals:

CHEMICAL	SOLUTION %	RATING
Sulfuric Acid	2	Excellent
	10	Good
	20	Good
Acetic Acid	2	Excellent
	10	Excellent
	20	Good
Hydrochloric Acid	2	Excellent
	10	Excellent
	20	Good
Phosphoric Acid	2	Excellent
	10	Excellent
	20	Excellent
Sodium Hydroxide	2	Excellent
	10	Good
	20	Good
Ammonia	2	Excellent
	10	Good
	20	Good
SOLVENTS		
Petrol	100	Fair
Acetone	100	Poor
Diesel	100	Good
Potable Water	100	Excellent
Salt Water	100	Excellent



POLYURETHANE PROTECTIVE COATING

ACCELERATOR

A liquid accelerator can be used to reduce the drying and curing time by up to 75% depending on the climatic conditions.

This may be helpful in areas of low temperature or low atmospheric moisture or in circumstances such as with production lines where down time is critical. The accelerator is not recommended in warm humid conditions.

The accelerator is supplied in pre-measured sachets and should be mixed into the PROTECTA-KOTE immediately prior to use. The addition of the accelerator will significantly reduce the pot life of the PROTECTA-KOTE

NON-SLIP SILICA ADDITIVE

For added slip resistance, particularly in wet conditions, a 230 silica additive can be added and mixed into the Protecta-Kote immediately prior to application.

The silicon additive is supplied in pre-measured packets. Due to the increased abrasiveness of the silica, this additive may reduce the life span of the PROTECTA-KOTE.

METCOTE ETCH PRIMER

METCOTE™ is a specially formulated etch primer that can be used on iron, steel, aluminium, fiberglass, and galvanized steel. Metcote is an ideal metal primer for use with Protecta-kote.

PRODUCT USES

- Primer for Protecta-kote.
- Primer for all metal and fibreglass surfaces.
- Heat resistant

ADVANTAGES

- Excellent adhesion to metal.
- Quick drying (30 mins at 25°C).
- Can be topcoated with most paints after 2 hours.
- Heat resistant up to 220°C
- Good acid, alkali and water resistance.

Protecta kote

POLYURETHANE PROTECTIVE COATING

SHIPPING INFORMATION

Kits

Master case holds 4 kits

Case dimension	505mm x 380mm x 230mm
Case weight	21,5kg
Total cases per pallet	48 (192 kits)
Pallet dimensions (L x W x H)	1200mm x 1000mm x 1820mm
Single pallet gross weight	1060kg

One litre cans

Master case holds 12 cans

Case dimension	410mm x 290mm x 210mm
Case weight	15kg
Total cases per pallet	80
Pallet dimensions (L x W x H)	1080mm x 1080mm x 1680mm
Single pallet gross weight	1182kg

Four litre cans

Master case holds 4 cans

Case dimension	350mm x 347mm x 215mm
Case weight	18.8kg
Total cases per pallet	72
Pallet dimensions (L x W x H)	1080mm x 1080 x 1700mm
Single pallet gross weight	1380kg

One litre spray cans

Master case holds 12 cans

Case dimension	365mm x 280mm x 240mm
Case weight	14.7kg
Total cases per pallet	80
Pallet dimensions (L x W x H)	1000mm x 1200mm x 1180mm
Single pallet gross weight	1200kg



POLYURETHANE PROTECTIVE COATING

CUSTOMS TARIFF AND TRANSPORT INFORMATION

- Protecta-kote ships under the tariff code: **3208.90.90**
“Other paints and varnishes, based on synthetic polymers or chemically modified natural polymers, dispersed or dissolved in a non-aqueous medium...”
- EA CODE: 127 HAZCHEM CODE: 3 Y KEMLER: 33
- UN No.: 1263 PACKING GROUP: III IMO CLASS: 3.3 MARINE POLLUTANT CLASS: P



POLYURETHANE PROTECTIVE COATING

MATERIAL SAFETY DATA SHEET

SECTION 1. IDENTIFICATION OF THE SUBSTANCE / PREPARATION

NAME: PROTECTA-KOTE BRUSH ON OR SPRAY

C.A.S. No.: N/A E.C. No.: N/E E.C. LABEL: N/E ECOCHEM REF.: 96.27.02
UN/SIN No.: 1263 EAC: 127 HAZCHEM: 3 Y KEMLER: 33 HAZARD RATING:
SAPMA: 2-H-J

IN EMERGENCY CONTACT: THE TECHNICAL MANAGER AT PHONE:

+2721 555-3090

SECTION 2. COMPOSITION/INFORMATION ON INGREDIENTS

EC CLASSIFICATION: XN R10,20,36/37/38,42,65 S2,16,24/25,42C,43A,62

HAZARDOUS AND/OR OTHER RELEVANT COMPONENTS

MDI (ISOCYANATE MONOMER) < 1% EECLabels: XN R20,36/37/38,42 OEL
.05 mg CL

XYLENE (XYLOL) >20% EECLabels: XN R10,20/21,38 OEL 435. mg RL+"S"
(CL/RL = Controlled/Recommended level "S" = Skin annotation)

SECTION 3. HAZARDS IDENTIFICATION

SAPMA HEALTH RATING: 2-MODERATE - Temporary or minor injury
possible even if treatment is given.

Inhalation sensitiser

INHALATION: HARMFUL. Contains ISOCYANATE. Sensitiser with
accumulative effects.

SKIN: Irritating, risk of dermatitis.

EYES: Irritating.

INGESTION: Irritating and nauseating.

NO CARCINOGENIC, MUTAGENIC OR GENETIC EFFECTS ESTABLISHED

May have short term environmental effects. Contain, monitor & remove.



POLYURETHANE PROTECTIVE COATING

MATERIAL SAFETY DATA SHEET CONT.

SECTION 4. FIRST AID MEASURES

INHALATION: Move to fresh air. In case of any discomfort seek medical attention immediately.

SKIN: Use hand cleaner/soap & water. Remove contaminated clothing. If any discomfort get medical attention.

EYES: Rinse immediately with plenty of water. Seek medical advice.

INGESTION: Wash mouth with plenty of water. Do NOT induce Vomiting. Seek medical advice.

SECTION 5. FIRE FIGHTING MEASURES

Flammable with toxic fumes.

Containers can become pressurised if contents are contaminated with water.

Foam. CO². Dry powder. Fog to cool and control. Do NOT use water jets.

Blown or distorted containers should be handled with extreme caution.

SECTION 6. ACCIDENTAL RELEASE MEASURES - SEE ALSO SECTIONS 5,8 & 13

Contain & collect. Keep out of drains and sewers

SECTION 7. HANDLING AND STORAGE

Store separately from any reactive substances - oxidisers in particular.

No open flames. No smoking.

OPEN WITH CARE! Cover lid / bung with a cloth while releasing pressure.



POLYURETHANE PROTECTIVE COATING

MATERIAL SAFETY DATA SHEET CONT.

SECTION 8. EXPOSURE CONTROLS/PERSONAL PROTECTION

OEL.TWA: TYPE: Mixture See Section 2 "Skin"

SAPMA RATING: 2-H-J PPE: Full cover with hood

Inhalation sensitiser

INHALATION: Use respiratory protection. Handle with extreme care. Absorb any spillage at once.

SKIN: Use barrier cream and impervious gloves.

EYES: Use face shield or goggles. Avoid direct contact.

INGESTION: Observe the rules of hygiene. Wash before eating, drinking or smoking.

Appropriate hand protection and protective clothing must always be used

SECTION 9. PHYSICAL AND CHEMICAL PROPERTIES

CHEMICAL CLASS: MOISTURE/OH CURED RESIN APPEARANCE: LIQUID

ODOUR: PUNGENT DENSITY: 1.10 VISCOSITY: TBE NON-VOLATILE: 68%

FLASH POINT: >23°C BOILING POINT/RANGE: >100

SOLUBILITY:- WATER: Reacts

SECTION 10. STABILITY AND REACTIVITY

STATIC: Could produce static discharge - use earthing

STABILITY: Stable if stored under normal conditions.

SECTION 11. TOXICOLOGICAL INFORMATION

Inhalation sensitiser

LD50 ORAL: N/E mg LD50 SKIN: mg LC50 INHALATION: mg

SECTION 12. ECOLOGICAL INFORMATION

May have short term environmental effects. Contain, monitor & remove.

SECTION 13. DISPOSAL CONSIDERATIONS

Hazardous. Use reputable waste disposal contractors. Destroy used containers.



POLYURETHANE PROTECTIVE COATING

MATERIAL SAFETY DATA SHEET CONT.

SECTION 14. TRANSPORT INFORMATION

UN No.: 1263 PACKING GROUP: III IMO CLASS: 3.3 MARINE POLLUTANT
CLASS: P
EA CODE: 127 HAZCHEM CODE: 3 Y KEMLER: 33

SECTION 15. REGULATORY INFORMATION

EC INDEX No.: N/E EEC LABEL No. (EINECS/ELINCS): N/E
EC LABEL ICONS: XN HARMFUL
R10 Flammable
R36/37/38 Irritating to eyes, respiratory system and skin
S42 During spraying wear air supplied respirator.
R42 May cause sensitisation by inhalation
R65 Harmful: May cause lung damage if swallowed.
S24/25 Avoid contact with skin and eyes
S43 In case of fire, use water fog, foam or powder - Do not use water jets!
S62 If swallowed, do not induce vomiting : seek medical advice immediately
show this container or label.
CONTAINS ISOCYANATE. See instructions supplied by the manufacturer.

SECTION 16. OTHER INFORMATION

CONTAINS ISOCYANATE - POTENTIAL SENSITISER - ENSURE
PRECAUTIONS ARE TAKEN.
PAY SPECIAL ATTENTION TO STORAGE AND HANDLING
REQUIREMENTS.
IN CASE OF ANY DISCOMFORT ALWAYS SEEK MEDICAL ADVICE.

This MSDS conforms with General Administrative Regulations dated 6 Sept.
1996. (ISO-11014/ANSIZ400.1.1996)

*All information is given in good faith but without guarantee in respect of
accuracy. No responsibility is accepted for errors or omissions or the
consequences thereof. These recommendations were extracted from the
EcoChem database using the HAZMAN programme.*



POLYURETHANE PROTECTIVE COATING

TESTAMONIALS

Please note that Herculiner, Durabak and Pro-Tech are brand names of Protecta-kote.



POLYURETHANE PROTECTIVE COATING

TEST RESULTS

1. European Fire Classification Report
2. SABS: Abrasion tests
3. Technical Service Laboratory: fungal resistance
4. Istituto Giordano: Italian food contact
5. LAPI: Fire Classification

Protecta kote

BACK-TO-BLACK

permanently restores the color and shine of
all spray-on and brush-on bedliners



from this to this
in one easy coat

1 LITRE

Protecta kote

BACK-TO-BLACK

Polyurethane Bedliner Rejuvenator

- ▶ Ready to use
- ▶ Easy brush-on application
- ▶ Suitable for all spray-on and brush-on bedliners
- ▶ Unique Aliphatic Polyurethane formula resists fading, weathering
- ▶ Chemically bonds to your old bed-liner restoring the color and shine
- ▶ Colours available: black and grey

INSTRUCTIONS: Not recommended for plastic drop-in liners.

(1) Stir Protecta-kote Back-to-Black very well before use. (2) Clean heavy dirt and grime from the truck bed. Use a household detergent such as TSP and water to thoroughly remove all dirt, oil spots and petroleum products residue. Rinse area and allow it to dry thoroughly. (3) Cut away any loose and flaking bits of your bedliner. (4) Use masking tape and paper sheets to cover any areas which you wish not to be coated ensuring that the masking tape is pressed down firmly to avoid under-creep. Ensure that you have clean-up solvents and rags in easy reach. Immediately use Xylene to remove Protecta-kote Back-to-Black spills, and drips. (5) Stir Protecta-kote Back-to-Black very well. (6) Using a good quality paintbrush and or roller, paint Protecta-kote Back-to-Black onto the bedliner starting at the front and working backwards. Apply Protecta-kote Back-to-Black thinly and evenly so as to avoid running and ponding. Be very careful with the edges to avoid running onto your vehicle bodywork. (7) Apply the second coat if necessary as soon as the first coat is tack free (2-4 hrs depending on conditions) or simply touch up any areas you may have missed. Poor inter-coat adhesion will result when the second coat is applied after the first coat has fully cured. If the first coat has fully cured the surface must be abraded with 180 grit sand paper before applying the second coat. (8) Remove masking tape as soon as the second coat has been applied using a Stanley blade to prevent tearing. (9) The vehicle will be ready for light use in 6-8 hours. The Protecta-kote Back-to-Black may feel slightly tacky to the touch for a few days after applying. This is normal and will disappear within a few days. Full cure takes between 4 to 6 days so avoid placing any heavy articles onto the painted surface for this period. (10) Enjoy the new look of your truck bed.

This Can contains sufficient product to cover one full sized truck bed.

PRECAUTIONS:

AVOID CONTACT WITH SKIN AND EYES.

Can cause irritation. AVOID BREATHING VAPOR. USE IN A WELL-VENTILATED AREA. May cause coughing and lung irritation, headache, dizziness, nausea.

If swallowed, contact doctor or poison control center.

Do not induce vomiting. Give a glass of water.

If skin contact occurs, remove contaminated clothing and wash skin thoroughly with soap and water.

WARNING: Keep out of reach of children.
Contains Polyurethane and 30% Xylene.

Ingredients:
Trade Secret Registry No.
80100379 - 5000p
80100379 - 5001p
80100379 - 5002p
80100379 - 5003p
80100379 - 5004p
UN No. 1263
Class 3 HAZCHEM 3 (Y)
V.O.C. 2.9 LBS/GAL



Made in South Africa

Zest Polyurethanes (Pty) Ltd www.protectakote.co.za

Protecta kote

POLYURETHANE PROTECTIVE COATING



THE READY-TO-USE, DO-IT-YOURSELF POLYURETHANE PROTECTIVE COATING



Protecta kote

POLYURETHANE PROTECTIVE COATING



THE READY-TO-USE, DO-IT-YOURSELF POLYURETHANE PROTECTIVE COATING

